

LIMITED ASBESTOS IN BUILDING SURVEY

OF

FORMER RESTAURANT AND OFFICE BUILDING
505 ED CAREY DRIVE
HARLINGEN, TEXAS

FOR

DERRICK MERCHANT, PRESIDENT
7B BUILDING & DEVELOPMENT
13105 CR 1820,
LUBBOCK, TEXAS 79424

BY



February 12, 2019

Table Of Contents

Conditions Discovered

Recommendations and Signatures

Building 1

Homogenous Areas Inventory

Homogeneous Areas and ACM by Rooms

Floor plans/Sample locations

Lab Results

Building 2

Homogenous Areas Inventory

Homogeneous Areas and ACM by Rooms

Floor plans/Sample locations

Lab Results

Building 3

Homogenous Areas Inventory

Licenses

CONDITIONS DISCOVERED

BUILDING 1

ASBESTOS CONTAINING MATERIALS DISCOVERED:

Asbestos Containing Materials (ACM), materials with greater than 1% asbestos content, was discovered during the limited survey of the former restaurant building at 505 Ed Carey Drive in Harlingen, Texas. Materials identified to contain asbestos above the regulatory threshold of greater than 1% are identified below.

HA ID	PHYSICAL DESCRIPTION	ACM STATUS	ESTIMATED QTY.	UOM
W02	MISC, mastic, mirror	Positive	120	S.F.

HOMOGENEOUS AREAS IDENTIFIED:

During the inspection the inspector identified the homogeneous areas (HA ID) listed in the "Homogeneous Areas Inventory" section of this report. Fifty-one samples were collected and shipped to an accredited laboratory for analysis by Polarized Light Microscopy (PLM). Three of the samples were identified to contain asbestos by PLM. Therefore, one of the homogeneous areas was identified to contain asbestos above the regulatory standard. There were no "Presumed Asbestos Containing Materials."

SPECIAL CONDITIONS:

Roofing was determined to be metal designed to look like Spanish clay tile roofing. Metal is not a suspect material and therefore was not sampled. However, roofing felts were discovered beneath the metal roofing and the felt was sampled for this inspection. Obvious existing damage to the roofing was present prior to this inspection.

BUILDING 2

ASBESTOS CONTAINING MATERIALS DISCOVERED:

Asbestos Containing Materials (ACM), materials with greater than 1% asbestos content, was discovered during the limited survey of the former office building at 505 Ed Carey Drive in Harlingen, Texas. Materials identified to contain asbestos above the regulatory threshold of greater than 1% are identified below.

HA ID	PHYSICAL DESCRIPTION	ACM STATUS	ESTIMATED QTY.	UOM
C01	AT, texture, sprayed medium popcorn	Positive	3000	S.F.
W02	MISC, mastic, black mirror	Positive	10	S.F.
W04	MISC, mastic, black on CMU block	Positive	400	S.F.

HOMOGENEOUS AREAS IDENTIFIED:

During the inspection the inspector identified the homogeneous areas (HA ID) listed in the "Homogeneous Areas Inventory" section of this report. Forty samples were collected and shipped to an accredited laboratory for analysis by Polarized Light Microscopy (PLM). Fourteen of the samples were identified to contain asbestos by PLM. Therefore, three of the homogeneous areas were identified to contain asbestos above the regulatory standard. There were no "Presumed Asbestos Containing Materials."

SPECIAL CONDITIONS:

Roofing was determined to be Spanish clay tile roofing. However, roofing felts were not discovered beneath the clay tile roofing during this inspection. Obvious existing damage to the roofing was present prior to this inspection.

BUILDING 3

ASBESTOS CONTAINING MATERIALS DISCOVERED:

Asbestos Containing Materials (ACM), materials with greater than 1% asbestos content, were not discovered during the limited survey of structure three, a carport, at 505 Ed Carey Drive in Harlingen, Texas.

HOMOGENEOUS AREAS IDENTIFIED:

During the inspection the inspector identified that no suspect asbestos containing materials were present on structure three.

SPECIAL CONDITIONS:

No special conditions exist for building three.

RECOMMENDATIONS AND SIGNATURES

RECOMMENDATIONS:

Environmental Services Agency recommends the following actions based on the conditions discovered during the inspection.

- Abate all Asbestos Containing Materials (both friable and non-friable) prior to renovation or demolition activity.
- DSHS rules require the services of an asbestos consultant be retained to design any abatement project where any quantity of friable ACM, or where 160 square feet, 260 linear feet, or 35 cubic feet of any non-friable material or combination of materials is to be removed.
- DSHS rules require abatement be conducted by a licensed/accredited asbestos abatement contractor, if any asbestos containing materials are to be removed.
- If new or previously undiscovered materials are discovered additional inspection and sampling would be required prior to renovation or demolition activities.

CERTIFICATIONS:

Environmental Services Agency, a licensed Asbestos Consulting Agency, certifies that this report represents the conditions discovered at the time of inspection. The survey was conducted by Terry L. Adams, a licensed Asbestos Consultant. The inspection data and report were reviewed by Terry L. Adams, a licensed Asbestos Consultant. "The asbestos survey to which this statement is attached is an accurate presentation of the findings of the investigation."


Terry L. Adams

License # 10-5683

February 12, 2019

INTENT OF SURVEY:

The building's owner chose to comply with current asbestos regulations under Federal and State law. The National Emissions Standard for Hazardous Air Pollutants (NESHAP 40 CFR 61), and the "Texas Asbestos Health Protection Rules" (TAC 295) apply to the owner's facility. The owner selected Environmental Services Agency, to conduct the asbestos in building survey. The survey was designed to identify asbestos containing materials (ACM) that require removal before repairs, renovations or demolitions. The survey contains information required to be communicated by the owner to employees, occupants, and workers at the facility under OSHA rules found at 29 CFR 1926.1101. This survey by itself does not constitute a management plan, operations and maintenance plan, and is not intended to be used as a risk assessment.

METHODOLOGY:

During the survey the inspector identified those materials which through the inspector's past experience and training in asbestos material identification should be considered suspect asbestos containing materials. Samples of these materials were collected for laboratory analysis.

The inspection was limited to readily accessible areas. Hidden areas or areas where it appeared unsafe were not inspected for this survey.

This report outlines the conditions discovered, suspect materials selected for sampling, the asbestos containing materials discovered, and recommendations as related to addressing ACM during construction. The survey will not address managing any asbestos containing materials discovered nor specifically require their abatement.

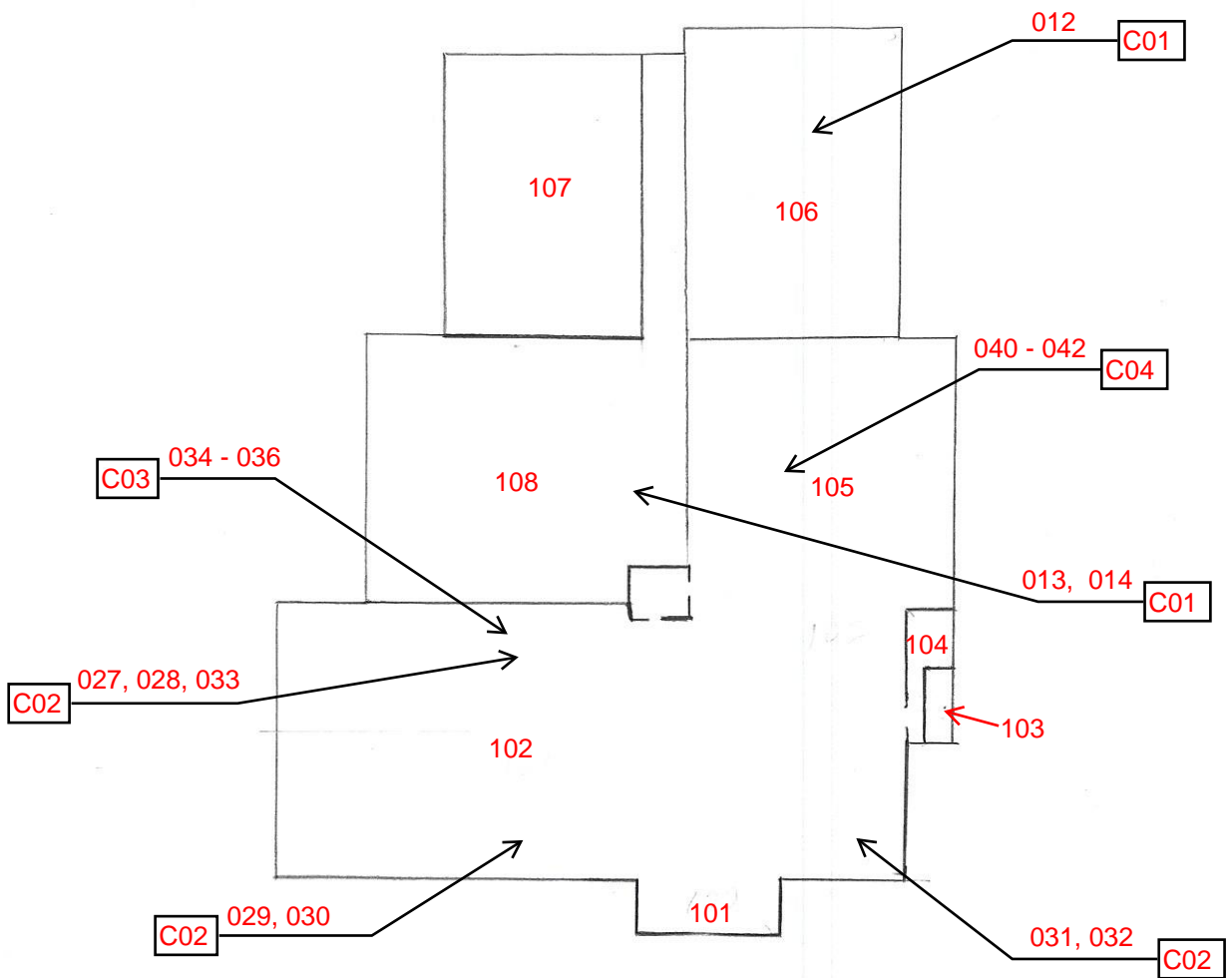
**BUILDING ONE
FORMER RESTAURANT**

HOMOGENEOUS AREAS INVENTORY

HA ID	PHYSICAL DESCRIPTION	ACM STATUS	ESTIMATED QTY.	UOM
C01	DW, tape and bed, smooth	Negative	2800	S.F.
C02	AT, texture, drag medium	Negative	3200	S.F.
C03	TBI, fiberglass paper backed	Negative	6000	S.F.
C04	SAT, 24" X 24" perforated, pebbled	Negative	1500	S.F.
F01	CER, 6" x 6" red with grout/mortar	Negative	4500	S.F.
F02	CER, 12" x 12" gray grout/mortar	Negative	800	S.F.
F03	RFT, 12" x 12" gray/green with glue	Negative	100	S.F.
F04	CER, 3" x 6" brick red/yellow, grout/mortar	Negative	4500	S.F.
M01	MISC, caulk white	Negative	160	L.F.
O01	HP, stucco, exterior	Negative	18000	S.F.
R01	RFLS, roofing felt	Negative	10000	S.F.
W01	RB, vinyl with mastic/glue	Negative	100	L.F.
W02	MISC, mastic, mirror	Positive	120	S.F.
W03	CER, 4" x 4" off-white, grout/mortar	Negative	2000	S.F.
W04	CER, 4" x 4" black grout/mortar	Negative	400	S.F.

HOMOGENEOUS AREAS AND ACM BY ROOMS

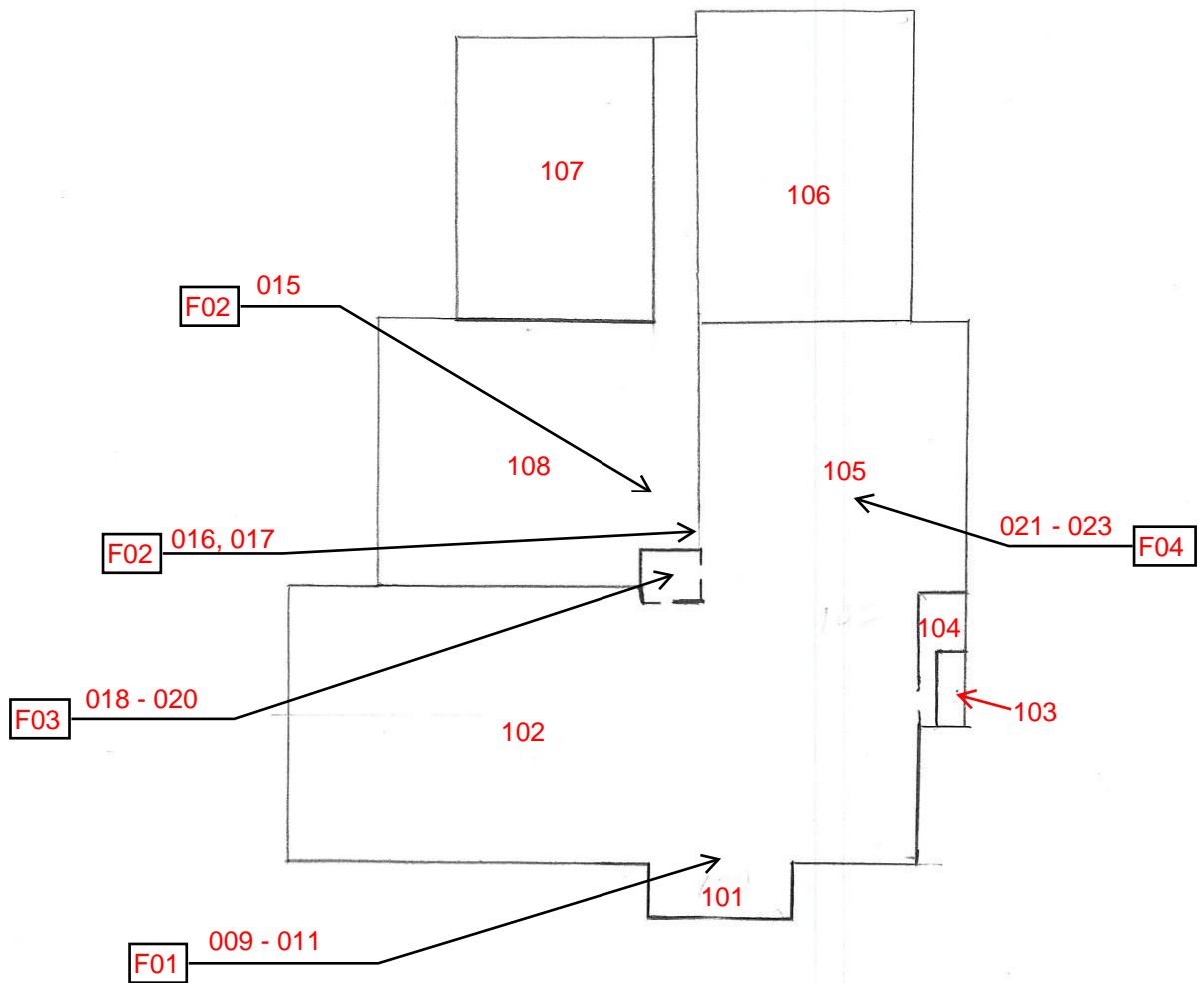
ROOM ID	HA ID	PHYSICAL DESCRIPTION	ACM STATUS	TESTED OR PRESUMED
101	C02	AT, texture, drag medium	Negative	Tested
	F01	CER, 6" x 6" red with grout/mortar	Negative	Tested
102	C01	DW, tape and bed, smooth	Negative	Tested
	C02	AT, texture, drag medium	Negative	Tested
	C03	TBI, fiberglass paper backed	Negative	Tested
	F01	CER, 6" x 6" red with grout/mortar	Negative	Tested
	F03	RFT, 12" x 12" gray/green with glue	Negative	Tested
	W01	RB, vinyl with mastic/glue	Negative	Tested
	W02	MISC, mastic, mirror	Positive	Tested
103	C01	DW, tape and bed, smooth	Negative	Tested
	F01	CER, 6" x 6" red with grout/mortar	Negative	Tested
	W03	CER, 4" x 4" off-white, grout/mortar	Negative	Tested
104.	C01	DW, tape and bed, smooth	Negative	Tested
	F01	CER, 6" x 6" red with grout/mortar	Negative	Tested
	W03	CER, 4" x 4" off-white, grout/mortar	Negative	Tested
105	C01	DW, tape and bed, smooth	Negative	Tested
	C02	AT, texture, drag medium	Negative	Tested
	C03	TBI, fiberglass paper backed	Negative	Tested
	C04	SAT, 24" X 24" perforated, pebbled	Negative	Tested
	F04	CER, 3" x 6" brick red/yellow, grout/mortar	Negative	Tested
106	C01	DW, tape and bed, smooth	Negative	Tested
	C03	TBI, fiberglass paper backed	Negative	Tested
	F01	CER, 6" x 6" red with grout/mortar	Negative	Tested
107	C01	DW, tape and bed, smooth	Negative	Tested
	C03	TBI, fiberglass paper backed	Negative	Tested
	F01	CER, 6" x 6" red with grout/mortar	Negative	Tested
108	C01	DW, tape and bed, smooth	Negative	Tested
	C03	TBI, fiberglass paper backed	Negative	Tested
	F01	CER, 6" x 6" red with grout/mortar	Negative	Tested
	F02	CER, 12" x 12" gray grout/mortar	Negative	Tested
	W04	CER, 4" x 4" black grout/mortar	Negative	Tested
Ext	M01	MISC, caulk white	Negative	Tested
	O01	HP, stucco, exterior	Negative	Tested
	R01	RFLS, roofing felt	Negative	Tested



CEILINGS

505 Ed Carey Drive Harlingen
Building 1

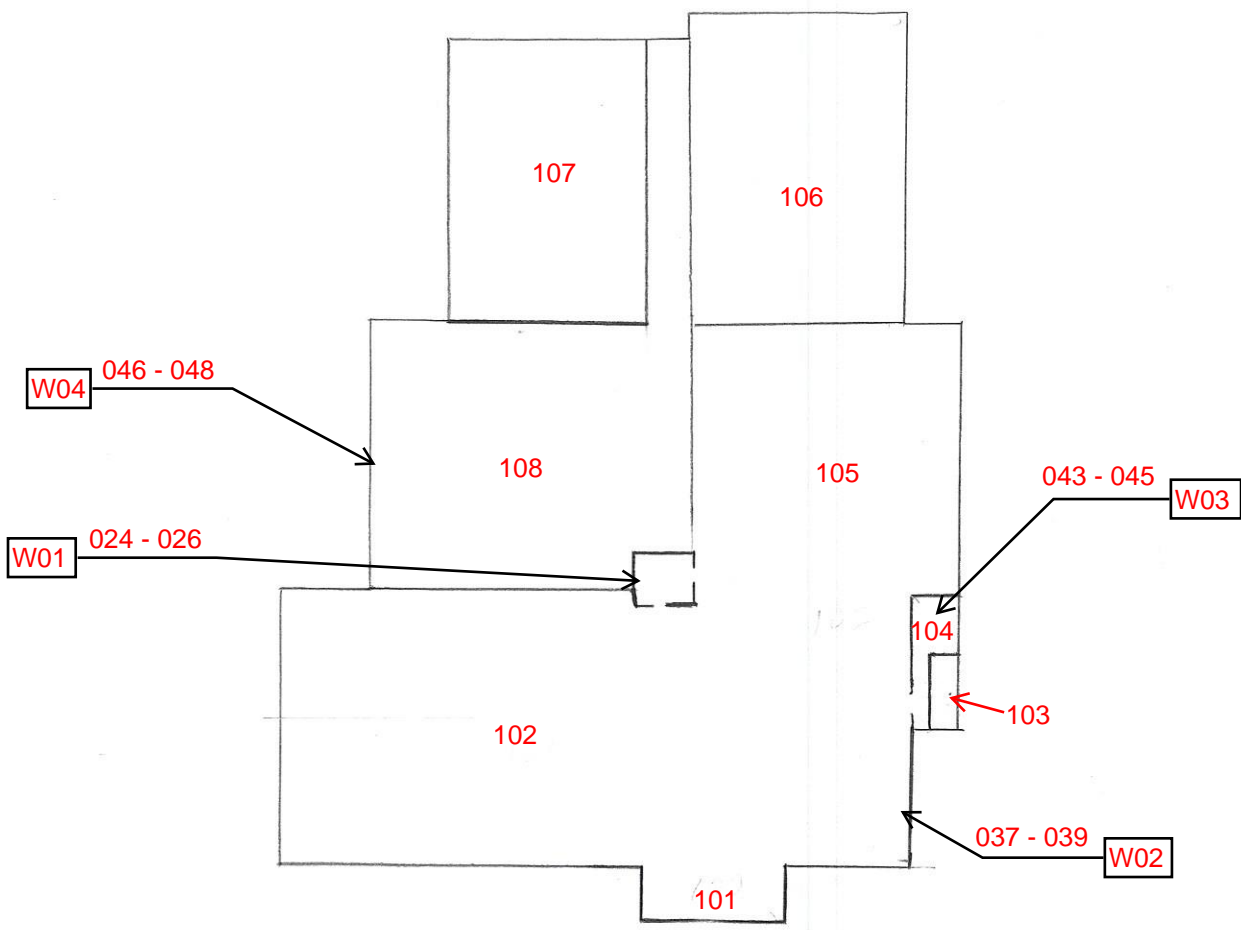




FLOORS

505 Ed Carey Drive Harlingen
Building 1

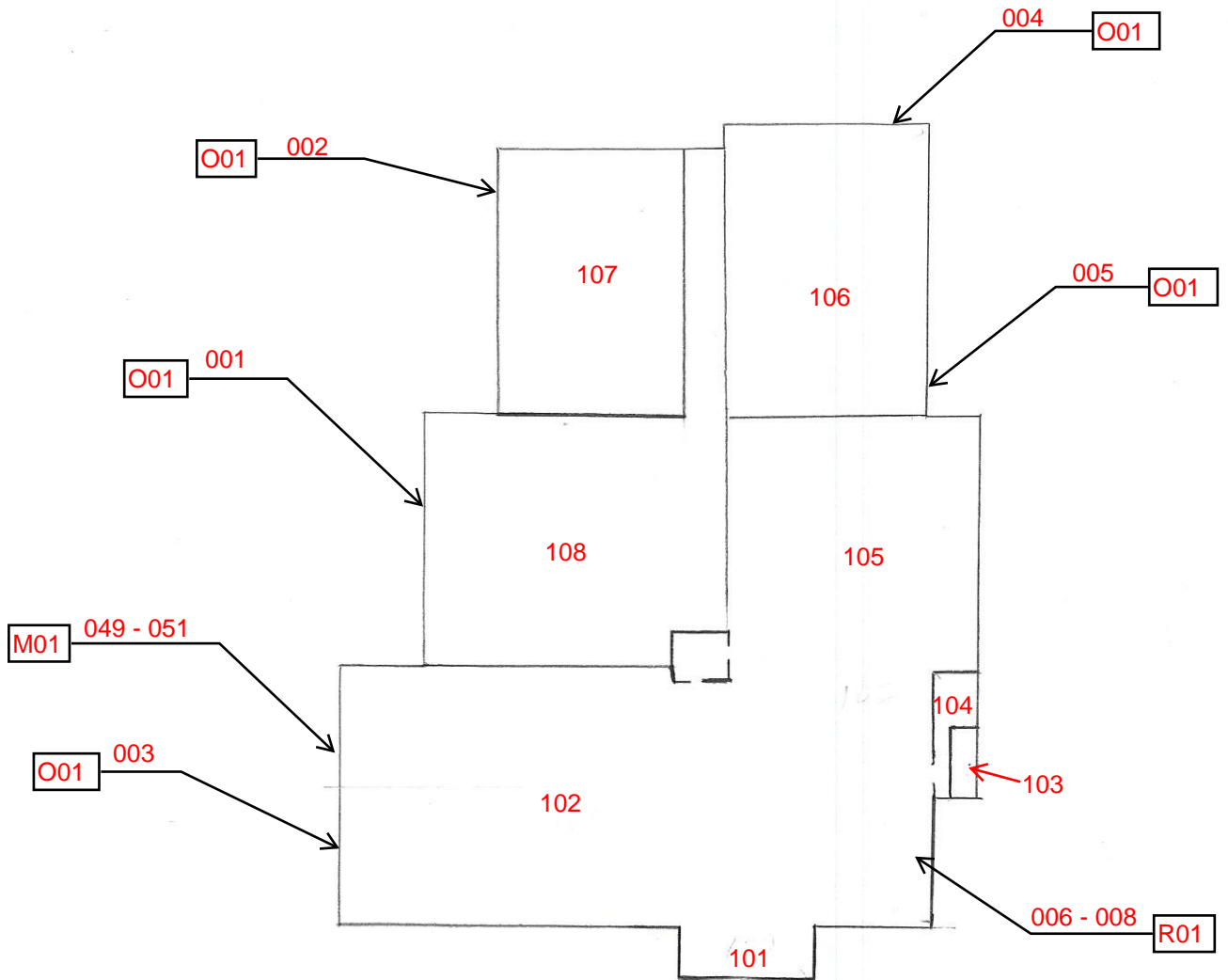




WALLS

505 Ed Carey Drive Harlingen
Building 1





EXTERIOR AND MISCELLANEOUS

505 Ed Carey Drive Harlingen
Building 1





Bulk Asbestos Fiber Analysis by Polarized Light Microscopy (PLM)

EPA 600/M4-82-020; 600/R-93/116


Terry Adams
 Environmental Services Agency
 P.O. Box 94182
 Lubbock TX 79493

J3 Order #: JH19105531
 Project #: 19001AI
 Date Received: 01-Feb-2019
 Date Analyzed: 07-Feb-2019
 Date Reported: 07-Feb-2019

505 Ed Carey Dr. Harlingen Bldg 1

Sample ID #	Sample Description	Asbestos Constituents	Non-Asbestos Constituents	
001	LAYER 1 Stucco, Yellow, Homogeneous	None Detected	Non-Fibrous Material	100%
	LAYER 2 Plaster, Gray, Homogeneous	None Detected	Non-Fibrous Material	100%
002	LAYER 1 Stucco, Yellow, Homogeneous	None Detected	Non-Fibrous Material	100%
	LAYER 2 Plaster, Gray, Homogeneous	None Detected	Non-Fibrous Material	100%
003	LAYER 1 Stucco, Yellow, Homogeneous	None Detected	Non-Fibrous Material	100%
	LAYER 2 Plaster, Gray, Homogeneous	None Detected	Non-Fibrous Material	100%
004	LAYER 1 Stucco, Yellow, Homogeneous	None Detected	Non-Fibrous Material	100%
	LAYER 2 Plaster, Gray, Homogeneous	None Detected	Non-Fibrous Material	100%
005	LAYER 1 Stucco, Yellow, Homogeneous	None Detected	Non-Fibrous Material	100%
	LAYER 2 Plaster, Gray, Homogeneous	None Detected	Non-Fibrous Material	100%
006	Felt, Black, Homogeneous	None Detected	Cellulose Fiber Non-Fibrous Material	80% 20%
007	Felt, Black, Homogeneous	None Detected	Cellulose Fiber Non-Fibrous Material	80% 20%

William Colbert Analyst


 Scott Ward, Ph.D. Lab Director

This report relates only to the materials tested. This report is for the exclusive use of the addressed client and shall not be reproduced except in full, without written approval by J3 Resources, Inc. (J3). Samples are analyzed according to the methods listed above and are subject to the inherent limitations of PLM and interference of matrix components. Reporting limit for the above method is a function of the quantity of sample analyzed, matrix interference, sample preparation, fiber size, and distribution. Asbestos may be detected in concentrations of <1% by area if sufficient material is analyzed. J3 recommends TEM confirmation of soils, vermiculite and non-friable organically bound materials (NOB) reported as None Detected or < 1% Asbestos by PLM. All samples received in good condition unless otherwise noted. This report shall not be used to claim product approval, certification, or endorsement by NVLAP, NIST, or any agency of the federal government.



Bulk Asbestos Fiber Analysis by Polarized Light Microscopy (PLM)

EPA 600/M4-82-020; 600/R-93/116


Terry Adams
Environmental Services Agency
P.O. Box 94182
Lubbock TX 79493

J3 Order #: JH19105531
Project #: 19001AI
Date Received: 01-Feb-2019
Date Analyzed: 07-Feb-2019
Date Reported: 07-Feb-2019

505 Ed Carey Dr. Harlingen Bldg 1

Sample ID #	Sample Description	Asbestos Constituents	Non-Asbestos Constituents	
008	Felt, Black, Homogeneous	None Detected	Cellulose Fiber Non-Fibrous Material	80% 20%
009	LAYER 1 Ceramic Tile, Red, Homogeneous	None Detected	Non-Fibrous Material	100%
	LAYER 2 Grout, Gray, Homogeneous	None Detected	Non-Fibrous Material	100%
	LAYER 3 Thin Set, Gray, Homogeneous	None Detected	Non-Fibrous Material	100%
010	LAYER 1 Ceramic Tile, Red, Homogeneous	None Detected	Non-Fibrous Material	100%
	LAYER 2 Grout, Gray, Homogeneous	None Detected	Non-Fibrous Material	100%
	LAYER 3 Thin Set, Gray, Homogeneous	None Detected	Non-Fibrous Material	100%
011	LAYER 1 Ceramic Tile, Red, Homogeneous	None Detected	Non-Fibrous Material	100%
	LAYER 2 Grout, Gray, Homogeneous	None Detected	Non-Fibrous Material	100%
	LAYER 3 Thin Set, Gray, Homogeneous	None Detected	Non-Fibrous Material	100%
012	LAYER 1 Texture, White, Homogeneous No Tape Present	None Detected	Non-Fibrous Material	100%
	LAYER 2 Joint Compound, Whi, Homogeneous	None Detected	Non-Fibrous Material	100%
	LAYER 3 Wallboard, Brown/ White, Homogeneous	None Detected	Cellulose Fiber Non-Fibrous Material	10% 90%

William Colbert Analyst


 Scott Ward, Ph.D. Lab Director

This report relates only to the materials tested. This report is for the exclusive use of the addressed client and shall not be reproduced except in full, without written approval by J3 Resources, Inc. (J3). Samples are analyzed according to the methods listed above and are subject to the inherent limitations of PLM and interference of matrix components. Reporting limit for the above method is a function of the quantity of sample analyzed, matrix interference, sample preparation, fiber size, and distribution. Asbestos may be detected in concentrations of <1% by area if sufficient material is analyzed. J3 recommends TEM confirmation of soils, vermiculite and non-friable organically bound materials (NOB) reported as None Detected or < 1% Asbestos by PLM. All samples received in good condition unless otherwise noted. This report shall not be used to claim product approval, certification, or endorsement by NVLAP, NIST, or any agency of the federal government.



Bulk Asbestos Fiber Analysis by Polarized Light Microscopy (PLM)

EPA 600/M4-82-020; 600/R-93/116


Terry Adams
Environmental Services Agency
P.O. Box 94182
Lubbock TX 79493

J3 Order #: JH19105531
Project #: 19001AI
Date Received: 01-Feb-2019
Date Analyzed: 07-Feb-2019
Date Reported: 07-Feb-2019

505 Ed Carey Dr. Harlingen Bldg 1

Sample ID #	Sample Description	Asbestos Constituents	Non-Asbestos Constituents	
013	LAYER 1 Texture, White, Homogeneous No Tape Present	None Detected	Non-Fibrous Material	100%
	LAYER 2 Joint Compound, Whi, Homogeneous	None Detected	Non-Fibrous Material	100%
	LAYER 3 Wallboard, Brown/ White, Homogeneous	None Detected	Cellulose Fiber Non-Fibrous Material	10% 90%
014	LAYER 1 Texture, White, Homogeneous No Tape Present	None Detected	Non-Fibrous Material	100%
	LAYER 2 Joint Compound, Whi, Homogeneous	None Detected	Non-Fibrous Material	100%
	LAYER 3 Wallboard, Brown/ White, Homogeneous	None Detected	Cellulose Fiber Non-Fibrous Material	10% 90%
015	LAYER 1 Ceramic Tile, Red, Homogeneous	None Detected	Non-Fibrous Material	100%
	LAYER 2 Grout, Gray, Homogeneous No Thin Set Present	None Detected	Non-Fibrous Material	100%
016	LAYER 1 Ceramic Tile, Red, Homogeneous	None Detected	Non-Fibrous Material	100%
	LAYER 2 Grout, Gray, Homogeneous No Thin Set Present	None Detected	Non-Fibrous Material	100%
017	LAYER 1 Ceramic Tile, Red, Homogeneous	None Detected	Non-Fibrous Material	100%
	LAYER 2 Grout, Gray, Homogeneous No Thin Set Present	None Detected	Non-Fibrous Material	100%

William Colbert Analyst


 Scott Ward, Ph.D. Lab Director

This report relates only to the materials tested. This report is for the exclusive use of the addressed client and shall not be reproduced except in full, without written approval by J3 Resources, Inc. (J3). Samples are analyzed according to the methods listed above and are subject to the inherent limitations of PLM and interference of matrix components. Reporting limit for the above method is a function of the quantity of sample analyzed, matrix interference, sample preparation, fiber size, and distribution. Asbestos may be detected in concentrations of <1% by area if sufficient material is analyzed. J3 recommends TEM confirmation of soils, vermiculite and non-friable organically bound materials (NOB) reported as None Detected or < 1% Asbestos by PLM. All samples received in good condition unless otherwise noted. This report shall not be used to claim product approval, certification, or endorsement by NVLAP, NIST, or any agency of the federal government.



Bulk Asbestos Fiber Analysis by Polarized Light Microscopy (PLM)

EPA 600/M4-82-020; 600/R-93/116


Terry Adams
 Environmental Services Agency
 P.O. Box 94182
 Lubbock TX 79493

J3 Order #: JH19105531
 Project #: 19001AI
 Date Received: 01-Feb-2019
 Date Analyzed: 07-Feb-2019
 Date Reported: 07-Feb-2019

505 Ed Carey Dr. Harlingen Bldg 1

Sample ID #	Sample Description	Asbestos Constituents	Non-Asbestos Constituents	
018	LAYER 1 Floor Tile, Green, Homogeneous	None Detected	Non-Fibrous Material	100%
	LAYER 2 Mastic, Amber, Homogeneous	None Detected	Non-Fibrous Material	100%
019	LAYER 1 Floor Tile, Green, Homogeneous	None Detected	Non-Fibrous Material	100%
	LAYER 2 Mastic, Amber, Homogeneous	None Detected	Non-Fibrous Material	100%
020	LAYER 1 Floor Tile, Green, Homogeneous	None Detected	Non-Fibrous Material	100%
	LAYER 2 Mastic, Amber, Homogeneous	None Detected	Non-Fibrous Material	100%
021	LAYER 1 Ceramic Tile, Brown, Homogeneous	None Detected	Non-Fibrous Material	100%
	LAYER 2 Grout, Gray, Homogeneous	None Detected	Non-Fibrous Material	100%
	LAYER 3 Thin Set, Gray, Homogeneous	None Detected	Non-Fibrous Material	100%
022	LAYER 1 Ceramic Tile, Brown, Homogeneous	None Detected	Non-Fibrous Material	100%
	LAYER 2 Grout, Gray, Homogeneous	None Detected	Non-Fibrous Material	100%
	LAYER 3 Thin Set, Gray, Homogeneous	None Detected	Non-Fibrous Material	100%

William Colbert Analyst


 Scott Ward, Ph.D. Lab Director

This report relates only to the materials tested. This report is for the exclusive use of the addressed client and shall not be reproduced except in full, without written approval by J3 Resources, Inc. (J3). Samples are analyzed according to the methods listed above and are subject to the inherent limitations of PLM and interference of matrix components. Reporting limit for the above method is a function of the quantity of sample analyzed, matrix interference, sample preparation, fiber size, and distribution. Asbestos may be detected in concentrations of <1% by area if sufficient material is analyzed. J3 recommends TEM confirmation of soils, vermiculite and non-friable organically bound materials (NOB) reported as None Detected or < 1% Asbestos by PLM. All samples received in good condition unless otherwise noted. This report shall not be used to claim product approval, certification, or endorsement by NVLAP, NIST, or any agency of the federal government.



Bulk Asbestos Fiber Analysis by Polarized Light Microscopy (PLM)

EPA 600/M4-82-020; 600/R-93/116


Terry Adams
 Environmental Services Agency
 P.O. Box 94182
 Lubbock TX 79493

J3 Order #: JH19105531
 Project #: 19001AI
 Date Received: 01-Feb-2019
 Date Analyzed: 07-Feb-2019
 Date Reported: 07-Feb-2019

505 Ed Carey Dr. Harlingen Bldg 1

Sample ID #	Sample Description	Asbestos Constituents	Non-Asbestos Constituents	
023	LAYER 1 Ceramic Tile, Brown, Homogeneous	None Detected	Non-Fibrous Material	100%
	LAYER 2 Grout, Gray, Homogeneous	None Detected	Non-Fibrous Material	100%
	LAYER 3 Thin Set, Gray, Homogeneous	None Detected	Non-Fibrous Material	100%
024	LAYER 1 Cove Base, Brown, Homogeneous	None Detected	Non-Fibrous Material	100%
	LAYER 2 Mastic, Yellow, Homogeneous	None Detected	Non-Fibrous Material	100%
025	LAYER 1 Cove Base, Brown, Homogeneous	None Detected	Non-Fibrous Material	100%
	LAYER 2 Mastic, Yellow, Homogeneous	None Detected	Non-Fibrous Material	100%
026	LAYER 1 Cove Base, Brown, Homogeneous	None Detected	Non-Fibrous Material	100%
	LAYER 2 Mastic, Yellow, Homogeneous	None Detected	Non-Fibrous Material	100%
027	Texture, White, Homogeneous	None Detected	Non-Fibrous Material	100%
028	Texture, White, Homogeneous	None Detected	Non-Fibrous Material	100%
029	Texture, White, Homogeneous	None Detected	Non-Fibrous Material	100%
030	Texture, White, Homogeneous	None Detected	Non-Fibrous Material	100%

William Colbert Analyst


 Scott Ward, Ph.D. Lab Director

This report relates only to the materials tested. This report is for the exclusive use of the addressed client and shall not be reproduced except in full, without written approval by J3 Resources, Inc. (J3). Samples are analyzed according to the methods listed above and are subject to the inherent limitations of PLM and interference of matrix components. Reporting limit for the above method is a function of the quantity of sample analyzed, matrix interference, sample preparation, fiber size, and distribution. Asbestos may be detected in concentrations of <1% by area if sufficient material is analyzed. J3 recommends TEM confirmation of soils, vermiculite and non-friable organically bound materials (NOB) reported as None Detected or < 1% Asbestos by PLM. All samples received in good condition unless otherwise noted. This report shall not be used to claim product approval, certification, or endorsement by NVLAP, NIST, or any agency of the federal government.



Bulk Asbestos Fiber Analysis by Polarized Light Microscopy (PLM)

EPA 600/M4-82-020; 600/R-93/116


Terry Adams
Environmental Services Agency
P.O. Box 94182
Lubbock TX 79493

J3 Order #: JH19105531
Project #: 19001AI
Date Received: 01-Feb-2019
Date Analyzed: 07-Feb-2019
Date Reported: 07-Feb-2019

505 Ed Carey Dr. Harlingen Bldg 1

Sample ID #	Sample Description	Asbestos Constituents	Non-Asbestos Constituents
031	Texture, White, Homogeneous	None Detected	Non-Fibrous Material 100%
032	Texture, White, Homogeneous	None Detected	Non-Fibrous Material 100%
033	Texture, White, Homogeneous	None Detected	Non-Fibrous Material 100%
034	LAYER 1 Tar Paper, Black/ Brown, Homogeneous	None Detected	Cellulose Fiber 80% Non-Fibrous Material 20%
	LAYER 2 Insulation, Pink, Homogeneous	None Detected	Mineral Wool 95% Non-Fibrous Material 5%
035	LAYER 1 Tar Paper, Black/ Brown, Homogeneous	None Detected	Cellulose Fiber 80% Non-Fibrous Material 20%
	LAYER 2 Insulation, Pink, Homogeneous	None Detected	Mineral Wool 95% Non-Fibrous Material 5%
036	LAYER 1 Tar Paper, Black/ Brown, Homogeneous	None Detected	Cellulose Fiber 80% Non-Fibrous Material 20%
	LAYER 2 Insulation, Pink, Homogeneous	None Detected	Mineral Wool 95% Non-Fibrous Material 5%
037	Mirror Mastic, Black, Homogeneous	Chrysotile 15%	Non-Fibrous Material 85%
038	Mirror Mastic, Black, Homogeneous	Chrysotile 15%	Non-Fibrous Material 85%

William Colbert Analyst


 Scott Ward, Ph.D. Lab Director

This report relates only to the materials tested. This report is for the exclusive use of the addressed client and shall not be reproduced except in full, without written approval by J3 Resources, Inc. (J3). Samples are analyzed according to the methods listed above and are subject to the inherent limitations of PLM and interference of matrix components. Reporting limit for the above method is a function of the quantity of sample analyzed, matrix interference, sample preparation, fiber size, and distribution. Asbestos may be detected in concentrations of <1% by area if sufficient material is analyzed. J3 recommends TEM confirmation of soils, vermiculite and non-friable organically bound materials (NOB) reported as None Detected or < 1% Asbestos by PLM. All samples received in good condition unless otherwise noted. This report shall not be used to claim product approval, certification, or endorsement by NVLAP, NIST, or any agency of the federal government.



Bulk Asbestos Fiber Analysis by Polarized Light Microscopy (PLM)

EPA 600/M4-82-020; 600/R-93/116


Terry Adams
 Environmental Services Agency
 P.O. Box 94182
 Lubbock TX 79493

J3 Order #: JH19105531
 Project #: 19001AI
 Date Received: 01-Feb-2019
 Date Analyzed: 07-Feb-2019
 Date Reported: 07-Feb-2019

505 Ed Carey Dr. Harlingen Bldg 1

Sample ID #	Sample Description	Asbestos Constituents	Non-Asbestos Constituents
039	Mirror Mastic, Black, Homogeneous	Chrysotile 15%	Non-Fibrous Material 85%
040	Ceiling Tile, White/ Gray, Homogeneous	None Detected	Cellulose Fiber 40% Mineral Wool 40% Non-Fibrous Material 20%
041	Ceiling Tile, White/ Gray, Homogeneous	None Detected	Cellulose Fiber 40% Mineral Wool 40% Non-Fibrous Material 20%
042	Ceiling Tile, White/ Gray, Homogeneous	None Detected	Cellulose Fiber 40% Mineral Wool 40% Non-Fibrous Material 20%
043	LAYER 1 Ceramic Tile, White, Homogeneous	None Detected	Non-Fibrous Material 100%
	LAYER 2 Grout, White, Homogeneous	None Detected	Non-Fibrous Material 100%
	LAYER 3 Thin Set, White, Homogeneous	None Detected	Non-Fibrous Material 100%
044	LAYER 1 Ceramic Tile, White, Homogeneous	None Detected	Non-Fibrous Material 100%
	LAYER 2 Grout, White, Homogeneous	None Detected	Non-Fibrous Material 100%
	LAYER 3 Thin Set, White, Homogeneous	None Detected	Non-Fibrous Material 100%

William Colbert Analyst


 Scott Ward, Ph.D. Lab Director

This report relates only to the materials tested. This report is for the exclusive use of the addressed client and shall not be reproduced except in full, without written approval by J3 Resources, Inc. (J3). Samples are analyzed according to the methods listed above and are subject to the inherent limitations of PLM and interference of matrix components. Reporting limit for the above method is a function of the quantity of sample analyzed, matrix interference, sample preparation, fiber size, and distribution. Asbestos may be detected in concentrations of <1% by area if sufficient material is analyzed. J3 recommends TEM confirmation of soils, vermiculite and non-friable organically bound materials (NOB) reported as None Detected or < 1% Asbestos by PLM. All samples received in good condition unless otherwise noted. This report shall not be used to claim product approval, certification, or endorsement by NVLAP, NIST, or any agency of the federal government.



Bulk Asbestos Fiber Analysis by Polarized Light Microscopy (PLM)

EPA 600/M4-82-020; 600/R-93/116


Terry Adams
Environmental Services Agency
P.O. Box 94182
Lubbock TX 79493

J3 Order #: JH19105531
Project #: 19001AI
Date Received: 01-Feb-2019
Date Analyzed: 07-Feb-2019
Date Reported: 07-Feb-2019

505 Ed Carey Dr. Harlingen Bldg 1

Sample ID #	Sample Description	Asbestos Constituents	Non-Asbestos Constituents	
045	LAYER 1 Ceramic Tile, White, Homogeneous	None Detected	Non-Fibrous Material	100%
	LAYER 2 Grout, White, Homogeneous	None Detected	Non-Fibrous Material	100%
	LAYER 3 Thin Set, White, Homogeneous	None Detected	Non-Fibrous Material	100%
046	LAYER 1 Ceramic Tile, Black, Homogeneous	None Detected	Non-Fibrous Material	100%
	LAYER 2 Grout, Black, Homogeneous	None Detected	Non-Fibrous Material	100%
	LAYER 3 Thin Set, White, Homogeneous	None Detected	Non-Fibrous Material	100%
047	LAYER 1 Ceramic Tile, Black, Homogeneous	None Detected	Non-Fibrous Material	100%
	LAYER 2 Grout, Black, Homogeneous	None Detected	Non-Fibrous Material	100%
	LAYER 3 Thin Set, White, Homogeneous	None Detected	Non-Fibrous Material	100%
048	LAYER 1 Ceramic Tile, Black, Homogeneous	None Detected	Non-Fibrous Material	100%
	LAYER 2 Grout, Black, Homogeneous	None Detected	Non-Fibrous Material	100%
	LAYER 3 Thin Set, White, Homogeneous	None Detected	Non-Fibrous Material	100%
049	Caulk, White, Homogeneous	None Detected	Non-Fibrous Material	100%
050	Caulk, White, Homogeneous	None Detected	Non-Fibrous Material	100%

William Colbert Analyst


 Scott Ward, Ph.D. Lab Director

This report relates only to the materials tested. This report is for the exclusive use of the addressed client and shall not be reproduced except in full, without written approval by J3 Resources, Inc. (J3). Samples are analyzed according to the methods listed above and are subject to the inherent limitations of PLM and interference of matrix components. Reporting limit for the above method is a function of the quantity of sample analyzed, matrix interference, sample preparation, fiber size, and distribution. Asbestos may be detected in concentrations of <1% by area if sufficient material is analyzed. J3 recommends TEM confirmation of soils, vermiculite and non-friable organically bound materials (NOB) reported as None Detected or < 1% Asbestos by PLM. All samples received in good condition unless otherwise noted. This report shall not be used to claim product approval, certification, or endorsement by NVLAP, NIST, or any agency of the federal government.



Bulk Asbestos Fiber Analysis by Polarized Light Microscopy (PLM)

EPA 600/M4-82-020; 600/R-93/116


Terry Adams
 Environmental Services Agency
 P.O. Box 94182
 Lubbock TX 79493

J3 Order #: JH19105531
 Project #: 19001AI
 Date Received: 01-Feb-2019
 Date Analyzed: 07-Feb-2019
 Date Reported: 07-Feb-2019

505 Ed Carey Dr. Harlingen Bldg 1

Sample ID #	Sample Description	Asbestos Constituents	Non-Asbestos Constituents	
051	Caulk, White, Homogeneous	None Detected	Non-Fibrous Material	100%

William Colbert Analyst


 Scott Ward, Ph.D. Lab Director

This report relates only to the materials tested. This report is for the exclusive use of the addressed client and shall not be reproduced except in full, without written approval by J3 Resources, Inc. (J3). Samples are analyzed according to the methods listed above and are subject to the inherent limitations of PLM and interference of matrix components. Reporting limit for the above method is a function of the quantity of sample analyzed, matrix interference, sample preparation, fiber size, and distribution. Asbestos may be detected in concentrations of <1% by area if sufficient material is analyzed. J3 recommends TEM confirmation of soils, vermiculite and non-friable organically bound materials (NOB) reported as None Detected or < 1% Asbestos by PLM. All samples received in good condition unless otherwise noted. This report shall not be used to claim product approval, certification, or endorsement by NVLAP, NIST, or any agency of the federal government.

CHAIN OF CUSTODY

105531

**ENVIRONMENTAL SERVICES
AGENCY**

Released by: Terry Adams	Date/Time: 1/30/2019
Air bill # _____ Fedex Lone Star Airborne Southwest	
Lab: <i>B Resources</i>	
Received by: <i>[Signature]</i>	Date/Time: <i>2/1/19 13:50</i>

**TURN AROUND TIME
REQUESTED: 5 Day**

Project Number: 19001A1 P.O.#: _____
 Project Name: 505 Ed Carey Dr Harlingen Bldg 1
 Date Sampled: 1-30-2019 Page 1 of 1
 Inspector: Terry L. Adams

Sample		Asbestos						Notes:
Number:	Description/Location:	TIME ON	TIME OFF	VOLUME	PLM	PCM	TEM	
001 - 005	O01: HP, stucco, exterior				X			
006 - 008	R01: roofing felt				X			
009 - 011	F01: CER, 6" x 6" red with grout/mortar				X			
012 - 014	C01: DW, tape and bed, smooth				X			
015 - 017	F02: CER, 12" x 12" gray grout/mortar				X			
018 - 020	F03: RFT, 12" x 12" gray/green with glue				X			
021 - 023	F04: CER, 3" x 6" brick red/yellow, grout/mortar				X			
024 - 026	W01: RB, vinyl with mastic/glue				X			
027 - 033	C02: AT, texture, drag medium				X			
034 - 036	C03: TBI, fglass paper backed				X			
037 - 039	W02: MISC, mastic, mirror				X			
040 - 042	C04: SAT, 24" X 24" perforated, pebbled				X			
043 - 045	W03: CER, 4" x 4" off-white, grout/mortar				X			
046 - 048	W04: CER, 4" x 4" black grout/mortar				X			
049 - 051	M01: MISC, caulk white				X			

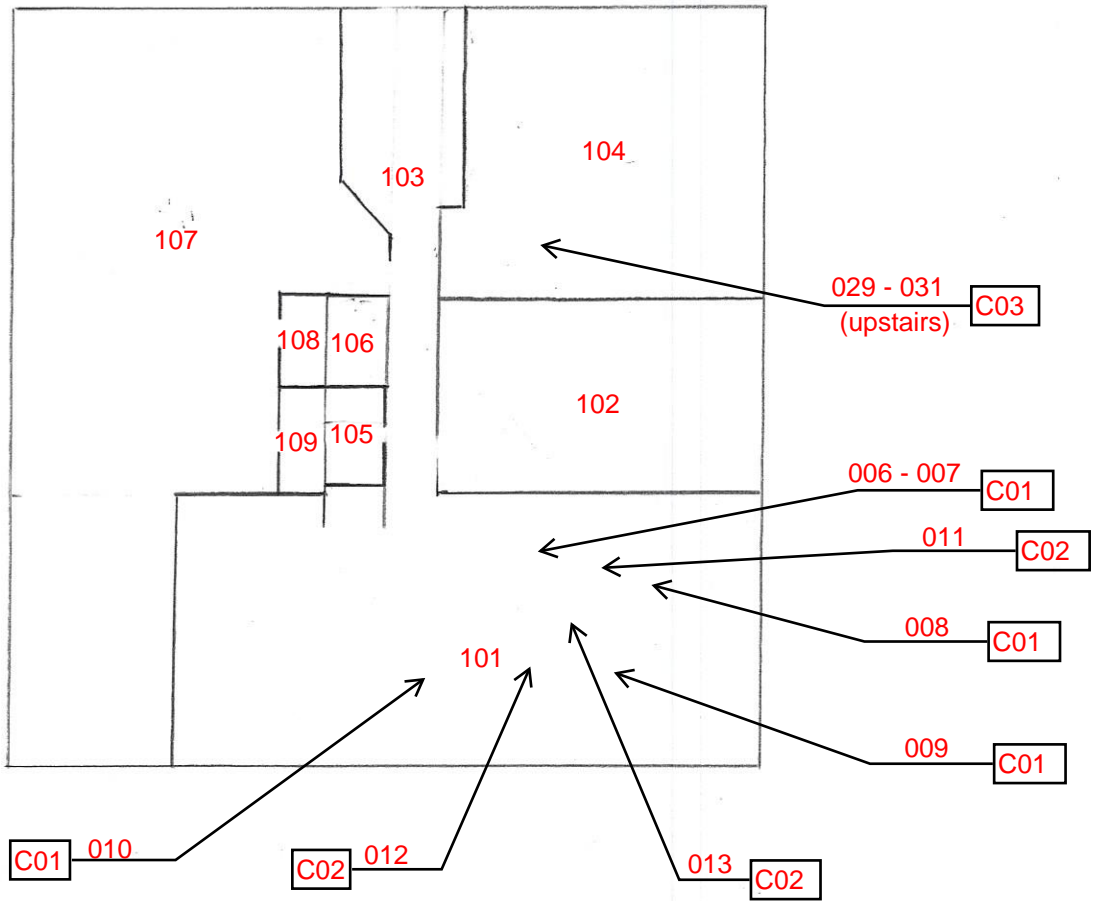
**BUILDING TWO
FORMER OFFICE BUILDING**

HOMOGENEOUS AREAS INVENTORY

HA ID	PHYSICAL DESCRIPTION	ACM STATUS	ESTIMATED QTY.	UOM
A01	MISC, paste white on duct board	Negative	40	S.F.
C01	AT, texture, sprayed medium popcorn	Positive	3000	S.F.
C02	DW, tape and bed	Negative	4000	S.F.
C03	DW, bare, tape and bed	Negative	3000	S.F.
E01	HP, stucco, exterior	Negative	15000	S.F.
F01	CER, 3" x 6" brick with grout/mortar	Negative	4500	S.F.
I01	TBI, fiberglass, paper backed	Negative	4000	S.F.
R01	MISC, tile, clay roof	Negative	5000	S.F.
W01	PFBD, gypsum	Negative	10000	S.F.
W02	MISC, mastic, black mirror	Positive	10	S.F.
W03	CER, off white with grout/mortar	Negative	165	S.F.
W04	MISC, mastic, black on CMU block	Positive	400	S.F.

HOMOGENEOUS AREAS AND ACM BY ROOMS

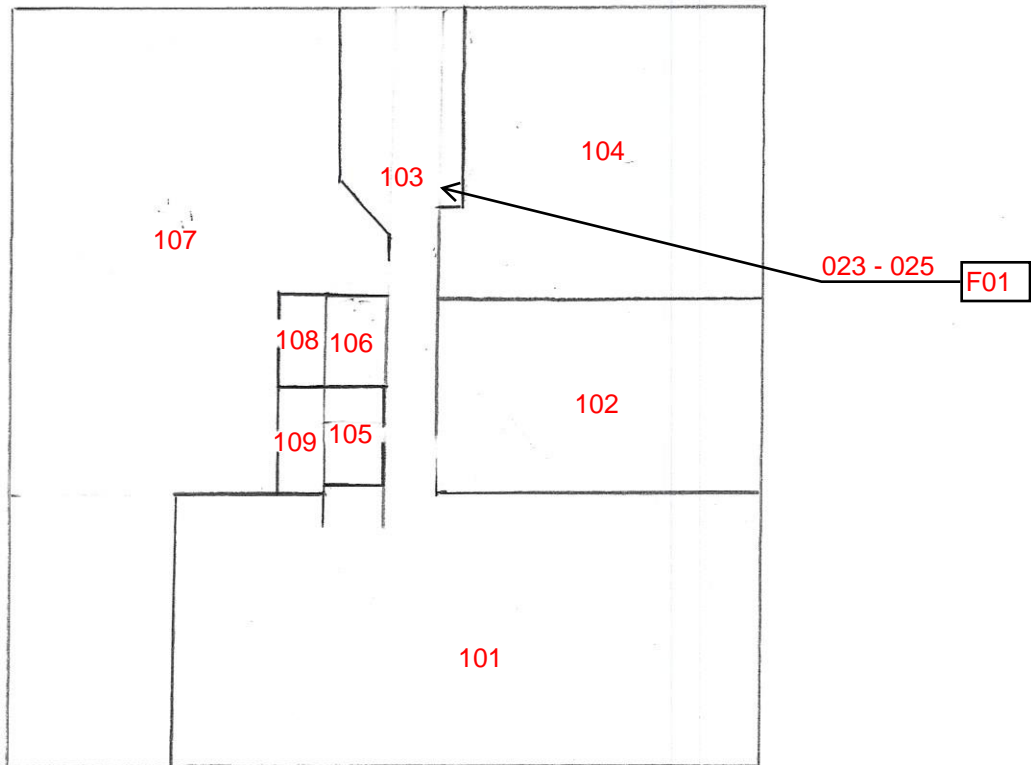
ROOM ID	HA ID	PHYSICAL DESCRIPTION	ACM STATUS	TESTED OR PRESUMED
101	C01	AT, texture, sprayed medium popcorn	Positive	Tested
	C02	DW, tape and bed	Negative	Tested
	F01	CER, 3" x 6" brick with grout/mortar	Negative	Tested
	I01	TBI, fiberglass, paper backed	Negative	Tested
	W01	PFBD, gypsum	Negative	Tested
	W02	MISC, mastic, black mirror	Positive	Tested
102	C01	AT, texture, sprayed medium popcorn	Positive	Tested
	C02	DW, tape and bed	Negative	Tested
	F01	CER, 3" x 6" brick with grout/mortar	Negative	Tested
	I01	TBI, fiberglass, paper backed	Negative	Tested
	W01	PFBD, gypsum	Negative	Tested
	103	C01	AT, texture, sprayed medium popcorn	Positive
C02		DW, tape and bed	Negative	Tested
F01		CER, 3" x 6" brick with grout/mortar	Negative	Tested
I01		TBI, fiberglass, paper backed	Negative	Tested
W01		PFBD, gypsum	Negative	Tested
104		C01	AT, texture, sprayed medium popcorn	Positive
	C02	DW, tape and bed	Negative	Tested
	F01	CER, 3" x 6" brick with grout/mortar	Negative	Tested
	I01	TBI, fiberglass, paper backed	Negative	Tested
	W01	PFBD, gypsum	Negative	Tested
	105	C02	DW, tape and bed	Negative
F01		CER, 3" x 6" brick with grout/mortar	Negative	Tested
W01		PFBD, gypsum	Negative	Tested
W03		CER, off white with grout/mortar	Negative	Tested
106		C02	DW, tape and bed	Negative
	F01	CER, 3" x 6" brick with grout/mortar	Negative	Tested
	W01	PFBD, gypsum	Negative	Tested
107	A01	MISC, paste white on duct board, upstairs	Negative	Tested
	C03	DW, bare, tape and bed	Negative	Tested
	I01	TBI, fiberglass, paper backed	Negative	Tested
	W04	MISC, mastic, black on CMU block	Positive	Tested
108	C03	DW, bare, tape and bed	Negative	Tested
109	C03	DW, bare, tape and bed	Negative	Tested
Ext.	E01	HP, stucco, exterior	Negative	Tested
	R01	MISC, tile, clay roof	Negative	Tested



CEILINGS

505 Ed Carey Dr. Harlingen
Building 2

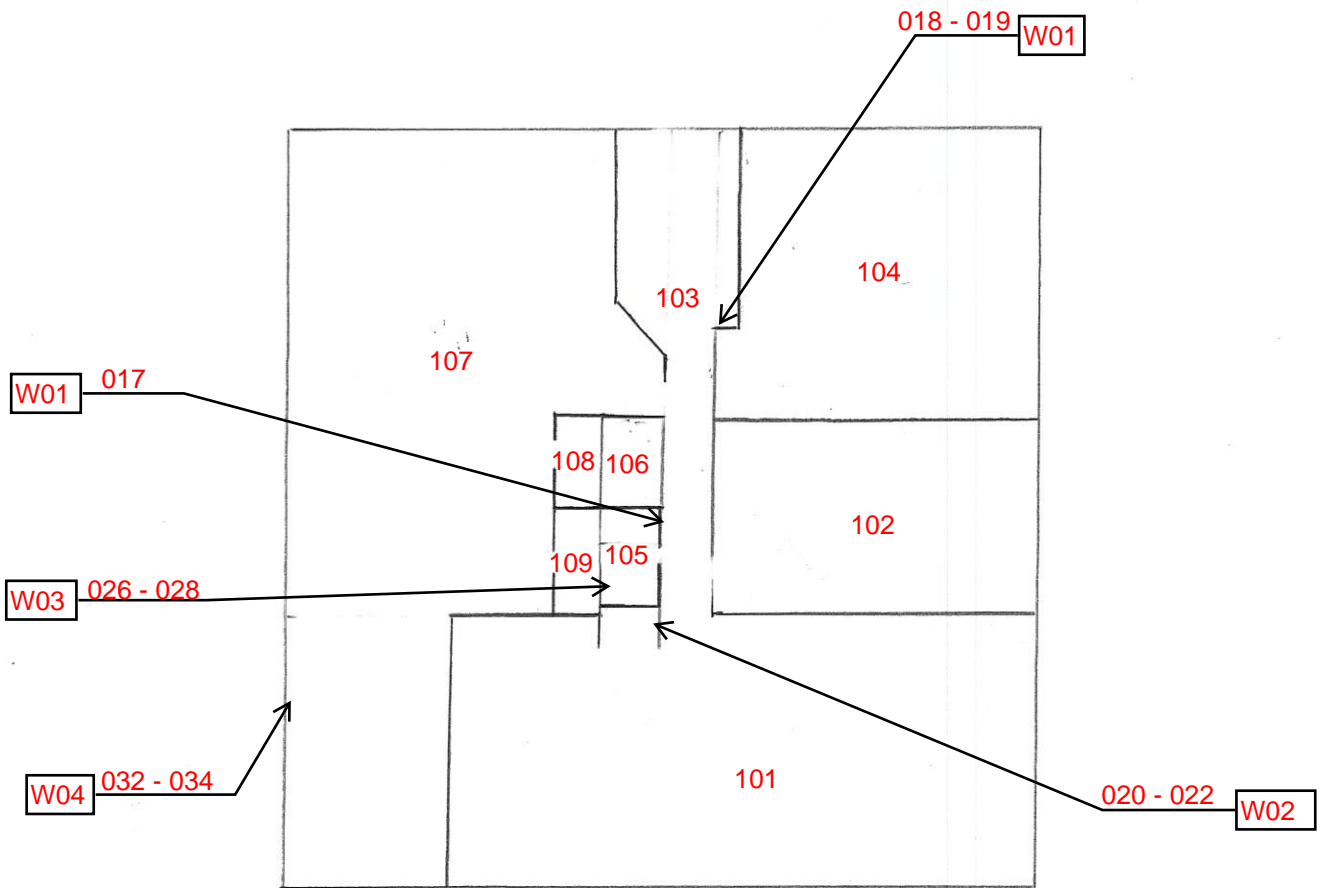




FLOORS

505 Ed Carey Dr. Harlingen
Building 2

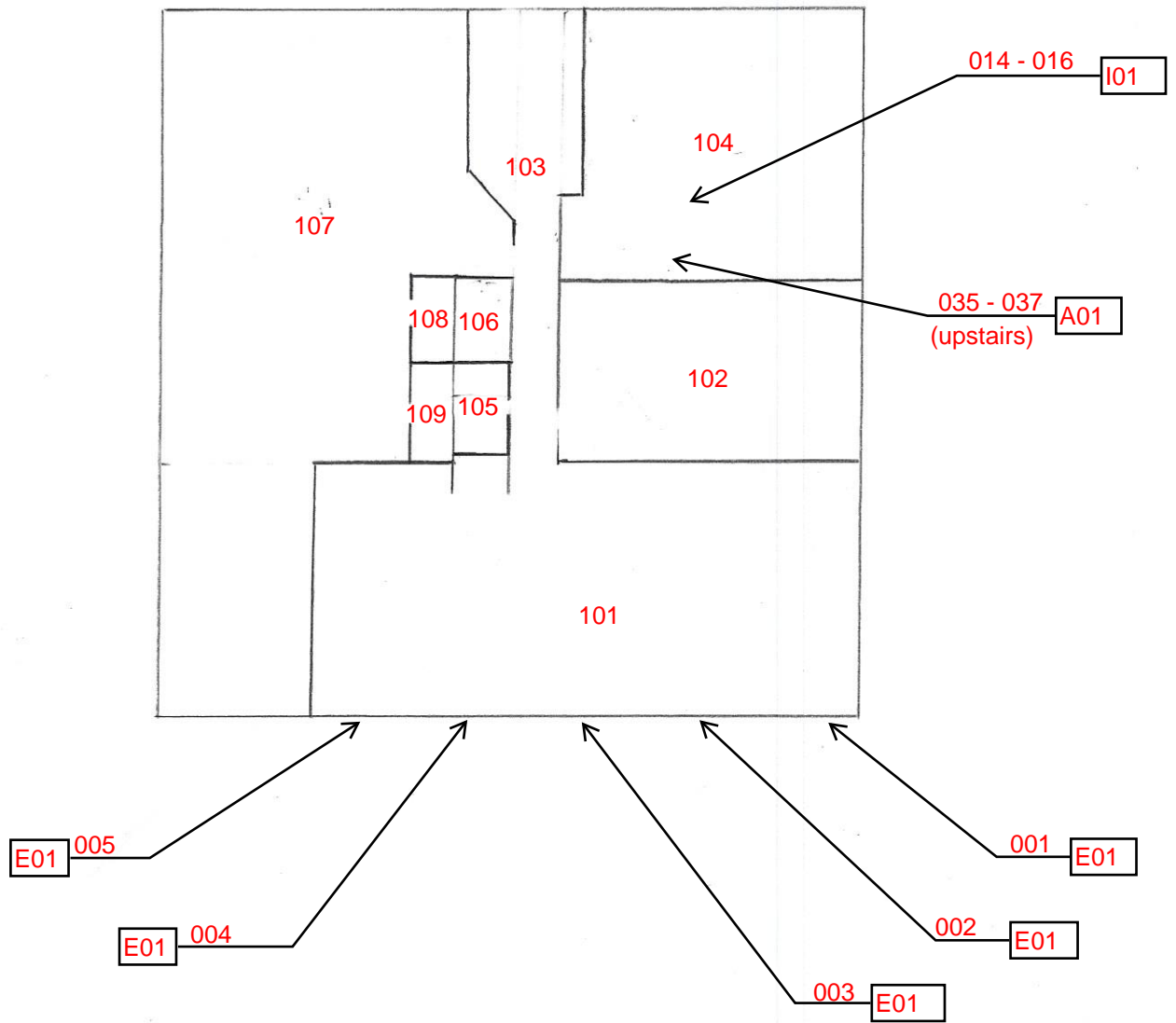




WALLS

505 Ed Carey Dr. Harlingen
Building 2





EXTERIOR AND MISCELLANEOUS

505 Ed Carey Dr. Harlingen
Building 2





Bulk Asbestos Fiber Analysis by Polarized Light Microscopy (PLM)

EPA 600/M4-82-020; 600/R-93/116


Terry Adams
Environmental Services Agency
P.O. Box 94182
Lubbock TX 79493

J3 Order #: JH19105532
Project #: 19001AI
Date Received: 01-Feb-2019
Date Analyzed: 07-Feb-2019
Date Reported: 07-Feb-2019

505 Ed Carey Dr Harlingen Bldg 2

Sample ID #	Sample Description	Asbestos Constituents	Non-Asbestos Constituents
001	LAYER 1 Plaster, White, Homogeneous	None Detected	Non-Fibrous Material 100%
	LAYER 2 Plaster, Gray, Homogeneous	None Detected	Non-Fibrous Material 100%
002	LAYER 1 Plaster, White, Homogeneous	None Detected	Non-Fibrous Material 100%
	LAYER 2 Plaster, Gray, Homogeneous	None Detected	Non-Fibrous Material 100%
003	LAYER 1 Plaster, White, Homogeneous	None Detected	Non-Fibrous Material 100%
	LAYER 2 Plaster, Gray, Homogeneous	None Detected	Non-Fibrous Material 100%
004	LAYER 1 Plaster, White, Homogeneous	None Detected	Non-Fibrous Material 100%
	LAYER 2 Plaster, Gray, Homogeneous	None Detected	Non-Fibrous Material 100%
005	LAYER 1 Plaster, White, Homogeneous	None Detected	Non-Fibrous Material 100%
	LAYER 2 Plaster, Gray, Homogeneous	None Detected	Non-Fibrous Material 100%
006	Popcorn Texture, White, Homogeneous	Chrysotile 5%	Non-Fibrous Material 95%
007	LAYER 1 Popcorn Texture, White, Homogeneous	Chrysotile 5%	Non-Fibrous Material 95%
	LAYER 2 Wallboard, Brown/ White, Homogeneous	None Detected	Cellulose Fiber 10% Non-Fibrous Material 90%

Jose Sequera Analyst


 Scott Ward, Ph.D. Lab Director

This report relates only to the materials tested. This report is for the exclusive use of the addressed client and shall not be reproduced except in full, without written approval by J3 Resources, Inc. (J3). Samples are analyzed according to the methods listed above and are subject to the inherent limitations of PLM and interference of matrix components. Reporting limit for the above method is a function of the quantity of sample analyzed, matrix interference, sample preparation, fiber size, and distribution. Asbestos may be detected in concentrations of <1% by area if sufficient material is analyzed. J3 recommends TEM confirmation of soils, vermiculite and non-friable organically bound materials (NOB) reported as None Detected or < 1% Asbestos by PLM. All samples received in good condition unless otherwise noted. This report shall not be used to claim product approval, certification, or endorsement by NVLAP, NIST, or any agency of the federal government.



Bulk Asbestos Fiber Analysis by Polarized Light Microscopy (PLM)

EPA 600/M4-82-020; 600/R-93/116

Terry Adams
Environmental Services Agency
P.O. Box 94182
Lubbock TX 79493


J3 Order #: JH19105532
Project #: 19001AI
Date Received: 01-Feb-2019
Date Analyzed: 07-Feb-2019
Date Reported: 07-Feb-2019

505 Ed Carey Dr Harlingen Bldg 2

Sample ID #	Sample Description	Asbestos Constituents	Non-Asbestos Constituents
008	LAYER 1 Popcorn Texture, White, Homogeneous	Chrysotile 5%	Non-Fibrous Material 95%
	LAYER 2 Tape, Beige, Homogeneous	None Detected	Cellulose Fiber 100%
	LAYER 3 Joint Compound, White, Homogeneous	None Detected	Non-Fibrous Material 100%
	LAYER 4 Wallboard, Brown/ White, Homogeneous	None Detected	Cellulose Fiber 10% Non-Fibrous Material 90%
009	LAYER 1 Popcorn Texture, White, Homogeneous	Chrysotile 5%	Non-Fibrous Material 95%
	LAYER 2 Tape, Beige, Homogeneous	None Detected	Cellulose Fiber 100%
	LAYER 3 Joint Compound, White, Homogeneous	None Detected	Non-Fibrous Material 100%
	LAYER 4 Wallboard, Brown/ White, Homogeneous	None Detected	Cellulose Fiber 10% Non-Fibrous Material 90%
010	LAYER 1 Popcorn Texture, White, Homogeneous	Chrysotile 5%	Non-Fibrous Material 95%
	LAYER 2 Tape, Beige, Homogeneous	None Detected	Cellulose Fiber 100%
	LAYER 3 Joint Compound, White, Homogeneous	None Detected	Non-Fibrous Material 100%
	LAYER 4 Wallboard, Brown/ White, Homogeneous	None Detected	Cellulose Fiber 10% Non-Fibrous Material 90%

Jose Sequera

Analyst


 Scott Ward, Ph.D. Lab Director

This report relates only to the materials tested. This report is for the exclusive use of the addressed client and shall not be reproduced except in full, without written approval by J3 Resources, Inc. (J3). Samples are analyzed according to the methods listed above and are subject to the inherent limitations of PLM and interference of matrix components. Reporting limit for the above method is a function of the quantity of sample analyzed, matrix interference, sample preparation, fiber size, and distribution. Asbestos may be detected in concentrations of <1% by area if sufficient material is analyzed. J3 recommends TEM confirmation of soils, vermiculite and non-friable organically bound materials (NOB) reported as None Detected or < 1% Asbestos by PLM. All samples received in good condition unless otherwise noted. This report shall not be used to claim product approval, certification, or endorsement by NVLAP, NIST, or any agency of the federal government.



Bulk Asbestos Fiber Analysis by Polarized Light Microscopy (PLM)

EPA 600/M4-82-020; 600/R-93/116

Terry Adams
Environmental Services Agency
P.O. Box 94182
Lubbock TX 79493


J3 Order #: JH19105532
Project #: 19001AI
Date Received: 01-Feb-2019
Date Analyzed: 07-Feb-2019
Date Reported: 07-Feb-2019

505 Ed Carey Dr Harlingen Bldg 2

Sample ID #	Sample Description	Asbestos Constituents	Non-Asbestos Constituents
011	LAYER 1 Popcorn Texture, White, Homogeneous	Chrysotile 5%	Non-Fibrous Material 95%
	LAYER 2 Tape, Beige, Homogeneous	None Detected	Cellulose Fiber 100%
	LAYER 3 Joint Compound, White, Homogeneous	None Detected	Non-Fibrous Material 100%
	LAYER 4 Wallboard, Brown/ White, Homogeneous	None Detected	Cellulose Fiber 10% Non-Fibrous Material 90%
012	LAYER 1 Popcorn Texture, White, Homogeneous	Chrysotile 5%	Non-Fibrous Material 95%
	LAYER 2 Tape, Beige, Homogeneous	None Detected	Cellulose Fiber 100%
	LAYER 3 Joint Compound, White, Homogeneous	None Detected	Non-Fibrous Material 100%
	LAYER 4 Wallboard, Brown/ White, Homogeneous	None Detected	Cellulose Fiber 10% Non-Fibrous Material 90%
013	LAYER 1 Popcorn Texture, White, Homogeneous	Chrysotile 5%	Non-Fibrous Material 95%
	LAYER 2 Tape, Beige, Homogeneous	None Detected	Cellulose Fiber 100%
	LAYER 3 Joint Compound, White, Homogeneous	None Detected	Non-Fibrous Material 100%
	LAYER 4 Wallboard, Brown/ White, Homogeneous	None Detected	Cellulose Fiber 10% Non-Fibrous Material 90%

Jose Sequera

Analyst


 Scott Ward, Ph.D. Lab Director

This report relates only to the materials tested. This report is for the exclusive use of the addressed client and shall not be reproduced except in full, without written approval by J3 Resources, Inc. (J3). Samples are analyzed according to the methods listed above and are subject to the inherent limitations of PLM and interference of matrix components. Reporting limit for the above method is a function of the quantity of sample analyzed, matrix interference, sample preparation, fiber size, and distribution. Asbestos may be detected in concentrations of <1% by area if sufficient material is analyzed. J3 recommends TEM confirmation of soils, vermiculite and non-friable organically bound materials (NOB) reported as None Detected or < 1% Asbestos by PLM. All samples received in good condition unless otherwise noted. This report shall not be used to claim product approval, certification, or endorsement by NVLAP, NIST, or any agency of the federal government.



Bulk Asbestos Fiber Analysis by Polarized Light Microscopy (PLM)

EPA 600/M4-82-020; 600/R-93/116


Terry Adams
Environmental Services Agency
P.O. Box 94182
Lubbock TX 79493

J3 Order #: JH19105532
Project #: 19001AI
Date Received: 01-Feb-2019
Date Analyzed: 07-Feb-2019
Date Reported: 07-Feb-2019

505 Ed Carey Dr Harlingen Bldg 2

Sample ID #	Sample Description	Asbestos Constituents	Non-Asbestos Constituents
014	LAYER 1 Tar Paper, Black/ Brown, Homogeneous	None Detected	Cellulose Fiber 70% Non-Fibrous Material 30%
	LAYER 2 Insulation, Pink, Homogeneous	None Detected	Mineral Wool 95% Non-Fibrous Material 5%
015	LAYER 1 Tar Paper, Black/ Brown, Homogeneous	None Detected	Cellulose Fiber 70% Non-Fibrous Material 30%
	LAYER 2 Insulation, Pink, Homogeneous	None Detected	Mineral Wool 95% Non-Fibrous Material 5%
016	LAYER 1 Tar Paper, Black/ Brown, Homogeneous	None Detected	Cellulose Fiber 70% Non-Fibrous Material 30%
	LAYER 2 Insulation, Pink, Homogeneous	None Detected	Mineral Wool 95% Non-Fibrous Material 5%
017	Wallboard, Brown/ White, Homogeneous	None Detected	Cellulose Fiber 10% Non-Fibrous Material 90%
018	Wallboard, Brown/ White, Homogeneous	None Detected	Cellulose Fiber 10% Non-Fibrous Material 90%
019	Wallboard, Brown/ White, Homogeneous	None Detected	Cellulose Fiber 10% Non-Fibrous Material 90%
020	Mirror Mastic, Black, Homogeneous	Chrysotile 10%	Non-Fibrous Material 90%

Jose Sequera Analyst


 Scott Ward, Ph.D. Lab Director

This report relates only to the materials tested. This report is for the exclusive use of the addressed client and shall not be reproduced except in full, without written approval by J3 Resources, Inc. (J3). Samples are analyzed according to the methods listed above and are subject to the inherent limitations of PLM and interference of matrix components. Reporting limit for the above method is a function of the quantity of sample analyzed, matrix interference, sample preparation, fiber size, and distribution. Asbestos may be detected in concentrations of <1% by area if sufficient material is analyzed. J3 recommends TEM confirmation of soils, vermiculite and non-friable organically bound materials (NOB) reported as None Detected or < 1% Asbestos by PLM. All samples received in good condition unless otherwise noted. This report shall not be used to claim product approval, certification, or endorsement by NVLAP, NIST, or any agency of the federal government.



Bulk Asbestos Fiber Analysis by Polarized Light Microscopy (PLM)

EPA 600/M4-82-020; 600/R-93/116


Terry Adams
Environmental Services Agency
P.O. Box 94182
Lubbock TX 79493

J3 Order #: JH19105532
Project #: 19001AI
Date Received: 01-Feb-2019
Date Analyzed: 07-Feb-2019
Date Reported: 07-Feb-2019

505 Ed Carey Dr Harlingen Bldg 2

Sample ID #	Sample Description	Asbestos Constituents	Non-Asbestos Constituents
021	Mirror Mastic, Black, Homogeneous	Chrysotile 10%	Non-Fibrous Material 90%
022	Mirror Mastic, Black, Homogeneous	Chrysotile 10%	Non-Fibrous Material 90%
023	LAYER 1 Ceramic Tile, Black/ Red, Homogeneous	None Detected	Non-Fibrous Material 100%
	LAYER 2 Grout, Black, Homogeneous	None Detected	Non-Fibrous Material 100%
	LAYER 3 Mastic, Tan, Homogeneous	None Detected	Non-Fibrous Material 100%
024	LAYER 1 Ceramic Tile, Black/ Red, Homogeneous	None Detected	Non-Fibrous Material 100%
	LAYER 2 Grout, Black, Homogeneous	None Detected	Non-Fibrous Material 100%
	LAYER 3 Mastic, Tan, Homogeneous	None Detected	Non-Fibrous Material 100%
025	LAYER 1 Ceramic Tile, Black/ Red, Homogeneous	None Detected	Non-Fibrous Material 100%
	LAYER 2 Grout, Black, Homogeneous	None Detected	Non-Fibrous Material 100%
	LAYER 3 Mastic, Tan, Homogeneous	None Detected	Non-Fibrous Material 100%
026	LAYER 1 Ceramic Tile, Off White, Homogeneous	None Detected	Non-Fibrous Material 100%
	LAYER 2 Grout, Off White, Homogeneous	None Detected	Non-Fibrous Material 100%
	LAYER 3 Mortar, Gray, Homogeneous	None Detected	Non-Fibrous Material 100%

Jose Sequera Analyst


 Scott Ward, Ph.D. Lab Director

This report relates only to the materials tested. This report is for the exclusive use of the addressed client and shall not be reproduced except in full, without written approval by J3 Resources, Inc. (J3). Samples are analyzed according to the methods listed above and are subject to the inherent limitations of PLM and interference of matrix components. Reporting limit for the above method is a function of the quantity of sample analyzed, matrix interference, sample preparation, fiber size, and distribution. Asbestos may be detected in concentrations of <1% by area if sufficient material is analyzed. J3 recommends TEM confirmation of soils, vermiculite and non-friable organically bound materials (NOB) reported as None Detected or < 1% Asbestos by PLM. All samples received in good condition unless otherwise noted. This report shall not be used to claim product approval, certification, or endorsement by NVLAP, NIST, or any agency of the federal government.



Bulk Asbestos Fiber Analysis by Polarized Light Microscopy (PLM)

EPA 600/M4-82-020; 600/R-93/116

Terry Adams
Environmental Services Agency
P.O. Box 94182
Lubbock TX 79493


J3 Order #: JH19105532
Project #: 19001AI
Date Received: 01-Feb-2019
Date Analyzed: 07-Feb-2019
Date Reported: 07-Feb-2019

505 Ed Carey Dr Harlingen Bldg 2

Sample ID #	Sample Description	Asbestos Constituents	Non-Asbestos Constituents	
027	LAYER 1 Ceramic Tile, Off White, Homogeneous	None Detected	Non-Fibrous Material	100%
	LAYER 2 Grout, Off White, Homogeneous	None Detected	Non-Fibrous Material	100%
	LAYER 3 Mortar, Gray, Homogeneous	None Detected	Non-Fibrous Material	100%
028	LAYER 1 Ceramic Tile, Off White, Homogeneous	None Detected	Non-Fibrous Material	100%
	LAYER 2 Grout, Off White, Homogeneous	None Detected	Non-Fibrous Material	100%
	LAYER 3 Mortar, Gray, Homogeneous	None Detected	Non-Fibrous Material	100%
029	LAYER 1 Texture, White, Homogeneous	None Detected	Non-Fibrous Material	100%
	LAYER 2 Tape, Beige, Homogeneous	None Detected	Cellulose Fiber	100%
	LAYER 3 Joint Compound, White, Homogeneous	None Detected	Non-Fibrous Material	100%
	LAYER 4 Wallboard, Brown/ White, Homogeneous	None Detected	Cellulose Fiber Non-Fibrous Material	10% 90%
030	LAYER 1 Texture, White, Homogeneous	None Detected	Non-Fibrous Material	100%
	LAYER 2 Wallboard, Brown/ White, Homogeneous	None Detected	Cellulose Fiber Non-Fibrous Material	10% 90%

Jose Sequera

Analyst


 Scott Ward, Ph.D. Lab Director

This report relates only to the materials tested. This report is for the exclusive use of the addressed client and shall not be reproduced except in full, without written approval by J3 Resources, Inc. (J3). Samples are analyzed according to the methods listed above and are subject to the inherent limitations of PLM and interference of matrix components. Reporting limit for the above method is a function of the quantity of sample analyzed, matrix interference, sample preparation, fiber size, and distribution. Asbestos may be detected in concentrations of <1% by area if sufficient material is analyzed. J3 recommends TEM confirmation of soils, vermiculite and non-friable organically bound materials (NOB) reported as None Detected or < 1% Asbestos by PLM. All samples received in good condition unless otherwise noted. This report shall not be used to claim product approval, certification, or endorsement by NVLAP, NIST, or any agency of the federal government.



Bulk Asbestos Fiber Analysis by Polarized Light Microscopy (PLM)

EPA 600/M4-82-020; 600/R-93/116

Terry Adams
Environmental Services Agency
P.O. Box 94182
Lubbock TX 79493


J3 Order #: JH19105532
Project #: 19001AI
Date Received: 01-Feb-2019
Date Analyzed: 07-Feb-2019
Date Reported: 07-Feb-2019

505 Ed Carey Dr Harlingen Bldg 2

Sample ID #	Sample Description	Asbestos Constituents	Non-Asbestos Constituents
031	LAYER 1 Texture, White, Homogeneous	None Detected	Non-Fibrous Material 100%
	LAYER 2 Tape, Beige, Homogeneous	None Detected	Cellulose Fiber 100%
	LAYER 3 Joint Compound, White, Homogeneous	None Detected	Non-Fibrous Material 100%
	LAYER 4 Wallboard, Brown/ White, Homogeneous	None Detected	Cellulose Fiber 10% Non-Fibrous Material 90%
032	Mastic, Black, Homogeneous	Chrysotile 5%	Non-Fibrous Material 95%
033	Mastic, Black, Homogeneous	Chrysotile 5%	Non-Fibrous Material 95%
034	Mastic, Black, Homogeneous	Chrysotile 5%	Non-Fibrous Material 95%
035	LAYER 1 Mastic, White, Homogeneous	None Detected	Non-Fibrous Material 100%
	LAYER 2 Foil / Paper Wrap, Silver/ Brown, Homogeneous	None Detected	Cellulose Fiber 35% Fibrous Glass 10% Non-Fibrous Material 55%
	LAYER 3 Insulation, Yellow, Homogeneous	None Detected	Mineral Wool 95% Non-Fibrous Material 5%

Jose Sequera

Analyst


 Scott Ward, Ph.D. Lab Director

This report relates only to the materials tested. This report is for the exclusive use of the addressed client and shall not be reproduced except in full, without written approval by J3 Resources, Inc. (J3). Samples are analyzed according to the methods listed above and are subject to the inherent limitations of PLM and interference of matrix components. Reporting limit for the above method is a function of the quantity of sample analyzed, matrix interference, sample preparation, fiber size, and distribution. Asbestos may be detected in concentrations of <1% by area if sufficient material is analyzed. J3 recommends TEM confirmation of soils, vermiculite and non-friable organically bound materials (NOB) reported as None Detected or < 1% Asbestos by PLM. All samples received in good condition unless otherwise noted. This report shall not be used to claim product approval, certification, or endorsement by NVLAP, NIST, or any agency of the federal government.



Bulk Asbestos Fiber Analysis by Polarized Light Microscopy (PLM)

EPA 600/M4-82-020; 600/R-93/116

Terry Adams
Environmental Services Agency
P.O. Box 94182
Lubbock TX 79493


J3 Order #: JH19105532
Project #: 19001AI
Date Received: 01-Feb-2019
Date Analyzed: 07-Feb-2019
Date Reported: 07-Feb-2019

505 Ed Carey Dr Harlingen Bldg 2

Sample ID #	Sample Description	Asbestos Constituents	Non-Asbestos Constituents	
036	LAYER 1 Mastic, White, Homogeneous	None Detected	Non-Fibrous Material	100%
	LAYER 2 Foil / Paper Wrap, Silver/ Brown, Homogeneous	None Detected	Cellulose Fiber Fibrous Glass Non-Fibrous Material	35% 10% 55%
	LAYER 3 Insulation, Yellow, Homogeneous	None Detected	Mineral Wool Non-Fibrous Material	95% 5%
037	LAYER 1 Mastic, White, Homogeneous	None Detected	Non-Fibrous Material	100%
	LAYER 2 Foil / Paper Wrap, Silver/ Brown, Homogeneous	None Detected	Cellulose Fiber Fibrous Glass Non-Fibrous Material	35% 10% 55%
	LAYER 3 Insulation, Yellow, Homogeneous	None Detected	Mineral Wool Non-Fibrous Material	95% 5%
038	Shingle, Red, Homogeneous	None Detected	Non-Fibrous Material	100%
039	Shingle, Red, Homogeneous	None Detected	Non-Fibrous Material	100%
040	Shingle, Red, Homogeneous	None Detected	Non-Fibrous Material	100%

Jose Sequera

Analyst


 Scott Ward, Ph.D. Lab Director

This report relates only to the materials tested. This report is for the exclusive use of the addressed client and shall not be reproduced except in full, without written approval by J3 Resources, Inc. (J3). Samples are analyzed according to the methods listed above and are subject to the inherent limitations of PLM and interference of matrix components. Reporting limit for the above method is a function of the quantity of sample analyzed, matrix interference, sample preparation, fiber size, and distribution. Asbestos may be detected in concentrations of <1% by area if sufficient material is analyzed. J3 recommends TEM confirmation of soils, vermiculite and non-friable organically bound materials (NOB) reported as None Detected or < 1% Asbestos by PLM. All samples received in good condition unless otherwise noted. This report shall not be used to claim product approval, certification, or endorsement by NVLAP, NIST, or any agency of the federal government.

**BUILDING THREE
CARPORT**

HOMOGENEOUS AREAS INVENTORY

HA ID	PHYSICAL DESCRIPTION	ACM STATUS	ESTIMATED QTY.	UOM
	No Suspect Asbestos Containing Materials			

LICENSES



**Texas Department of
State Health Services**

Asbestos Individual Consultant

TERRY L ADAMS

License No. 105683

Control No. 97237

Expiration Date: 8/7/2019

